

PANEL



Optics: Frosted PC panel
Material: Aluminum
Light Source: LED

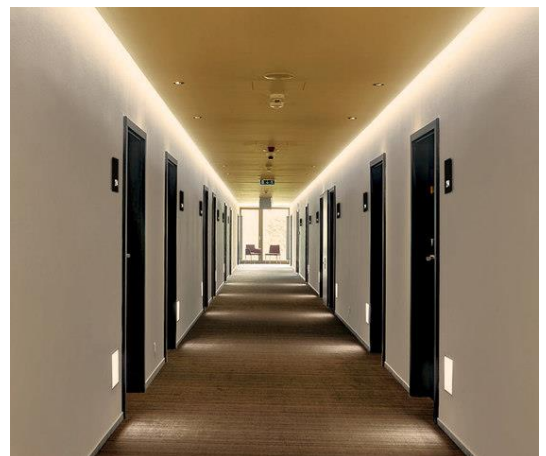
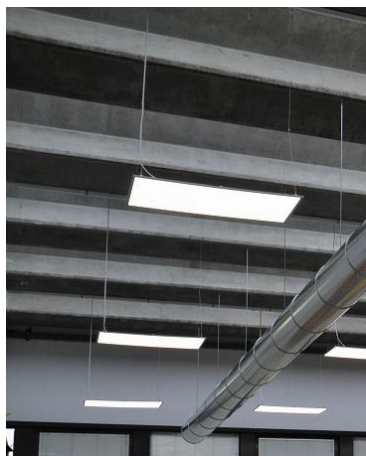
Characteristics

Dimensions: L: 600mm x W: 600mm x H: 15mm
Weight: 2,9kg
Recessed height: 11mm
Ingress protection: IP20
Impact protection: N/A
Protection class: I / II



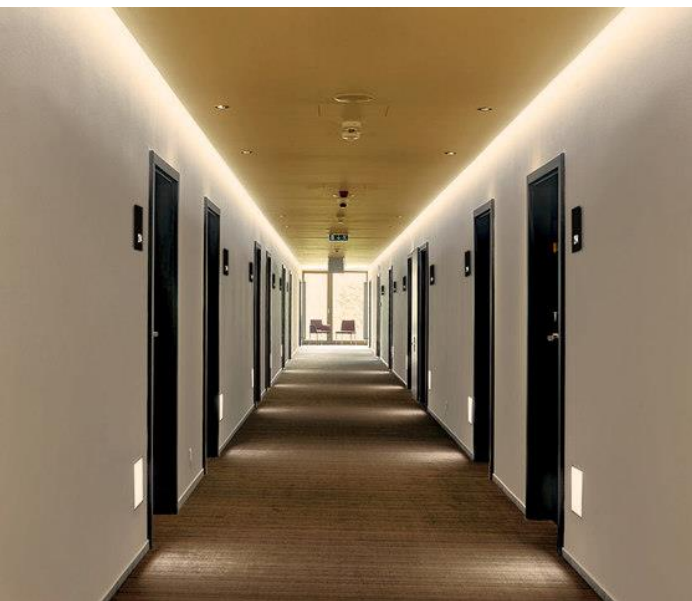
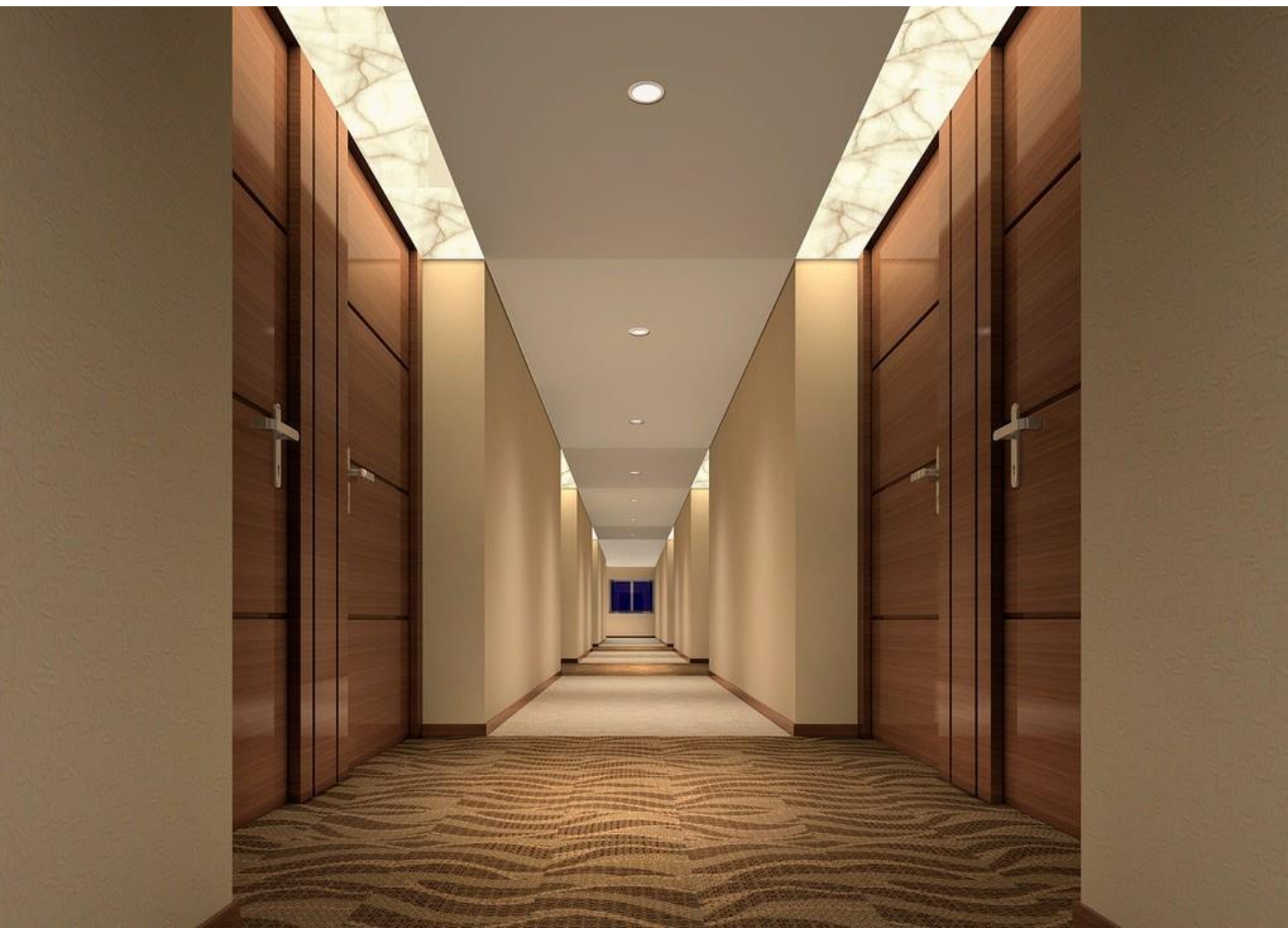
APPLICATION AREAS

- Stores
- Restarurants
- Hotels
- Offices
- Hospitals
- Residents
- Receptions



SPECIFICATION

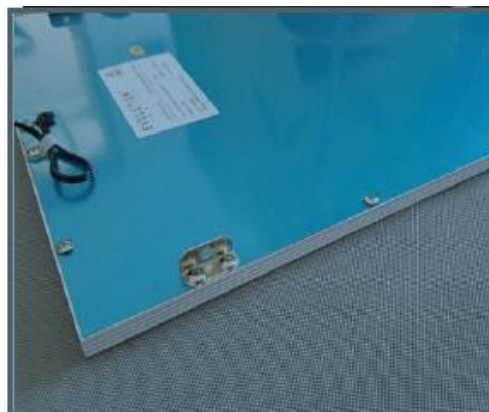
Certified:	No, IP20, luminaire complies with EN60598
Light Source:	LED
Overvoltage protection:	4 kV
Programmable version:	DALI, 0-10V, trailing + Leading edge
Non programmable versions:	40W
Luminous Flux:	100lm/W
Corrolated light temperature:	3000K, 4000K
CRI:	CRI90
SDCM:	>4
Lifetime according L80:	50,000h
Beam angle:	120°
Operational temperature range:	-35° to +35°C
Maintenance:	Replaceable
Mains voltage:	100-240 V AC/50-60 Hz
EMC:	Driver/luminaire according EN55015,EN61000-2-3,EN61547
Optics:	Frosted glarefree PC
Material:	Aluminum, stainless steel, PC
Weight:	2,9kg
Color:	White
Mounting / bracket:	Ceiling, wallmounting indoor
Recomended mounting height:	2m-6m
Mounted installation cable:	Yes, 3m with european powerplug



STRIHL SCANDINAVIA AB
WWW.STRIHL.SE
+46 (0)300-569980



Size (mm)	Power	LEDs Qty(pcs)
300x300	18W	50
300x600	40W	120
600x600	40W	120
600x600	50W	192
600x600	60W	240
620x620	40W	120
620x620	50W	192
620x620	60W	240
300x1200	40W	120
300x1200	50W	192
300x1200	60W	240
600x1200	50W	240
600x1200	72W	240



STRIHL SCANDINAVIA AB
 WWW.STRIHL.SE
 +46 (0)300-569980



STRIHL SCANDINAVIA AB
WWW.STRIHL.SE
+46 (0)300-569980