

GLOBE LED, Small & Large



Optics: Lenses : 2 5.1 5.2 5.3
 Material: Aluminum, steel pipe/bracket
 Light Source: 15, 22, 25 or 40 LEDs

Specification

Diameter GLOBE Small Diam. 365mm or Globe Large Diam. 507mm
 Weight 6,2-10,4kg exkl. polebracket
 Protection class IP66
 Insulation class IEC-EN60598I EU, II EU



APPLICATION AREAS

- Main roads
- Smaller roads
- Intersections
- Residential areas and pathways.
- Parks
- Parkinglots
- Squares
- Buisness centers

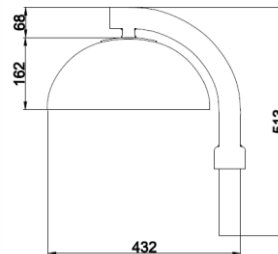
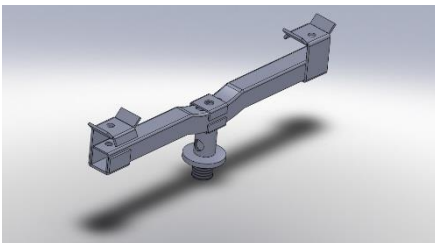
Product description

A nice decorative luminaire with the latest LED technology. Manufactured from light gray powder coated aluminum with or without flatglass. Delivered with 6m mounted installation cable FQQ 3x 1,5 or FQQ 2 x 1,5. LED board and driver are easily exchanged with a quick power device. Screwdriver is needed. Luminaire is available suited for wire hanging.

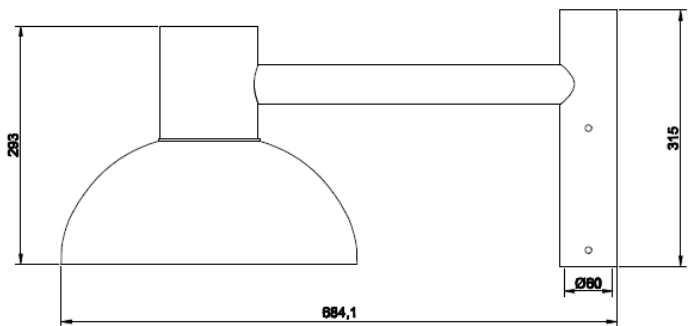
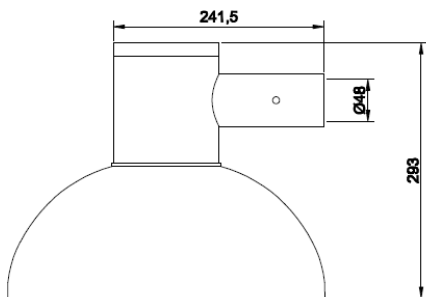
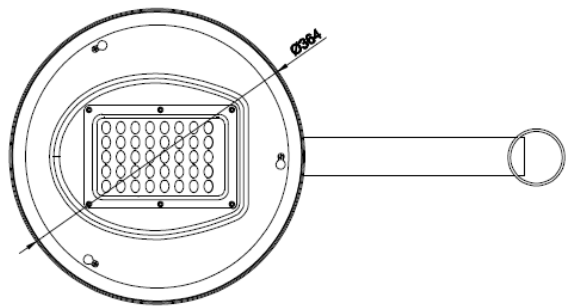
Effective cooling to maximize lifetime of LED:s.
 LED cooling flanges are hidden and protected inside the housing.

SPECIFICATION

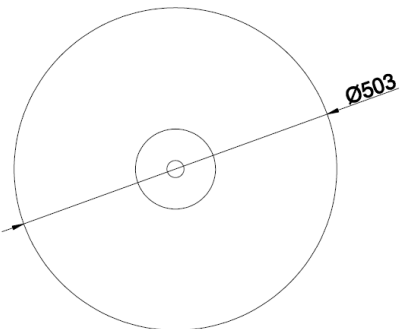
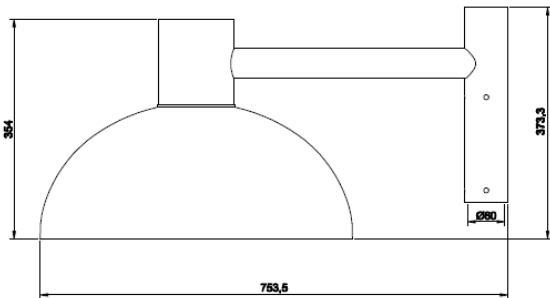
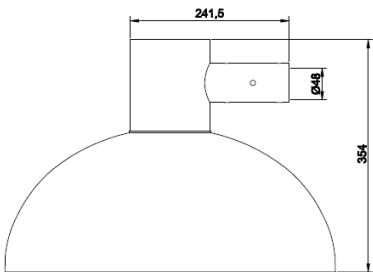
Certified:	No, luminaire complies with EN60598-2-3
Futureproof for automated maintenance:	No
Light Source:	15, 22, 25 or 40 LEDs, glare free
Overvoltage protection:	6kV, 8kV, 10kV
Programmable version:	Osram OT40,.OT60, OT90, Night dim, class II
Non programmable versions:	25W, 32W, 50W, 75W, 100W
Light output:	4000K 125-155 lm/W as standard 3000K 125-150 lm/W On request (depending on power)
Correlated colour temperature :	4000K as standard, (or. 3000K)
Colour rendering index:	4000K Ra83 or 3000K Ra85
Service life according L80F10:	100,000h or 125.000h, depending on power (25 °C)
Service life according L70	175,000h or 200.000h, depending on power(25 ° C) IESNA LM80
Operating temerature range:	-30° to +30°C, LED module is protected against direct sunlight
Driver/LEDs maintenance:	Exchangeable with power device, screwdriver is needed.
Mains voltage:	220-240 V AC/50-60 Hz
EMC:	Driver/luminaire accoring to EN55015,EN61000-2-3,EN61547
Optics:	Assymetric lenses 2 5.1 5.2 5.3, symmetric lenses are available.
Material:	High pressure diecasted aluminum, steelpipe
Weight:	6,2-10,4kg
Colour housing:	Housing RAL9006, bracket RAL9006, oprional colour can be offered
Colour module:	Light gray / silver RAL 9006
Bracket :	Ø48 or. Ø60, several types are available.
Recommended mounting height:	3m - 5m. Ca. 2,5-3m is recommended
Max SCx:	0,095m2 or 0,17m2
Mounted installation cable	Yes always, FQQ alt. MPC, 2x1,5, 3x1,5, 5x1,5
Luminaire design:	R. Carlén



Small



Large



STRIHL SCANDINAVIA AB
WWW.STRIHL.SE
+46 (0)300-569980